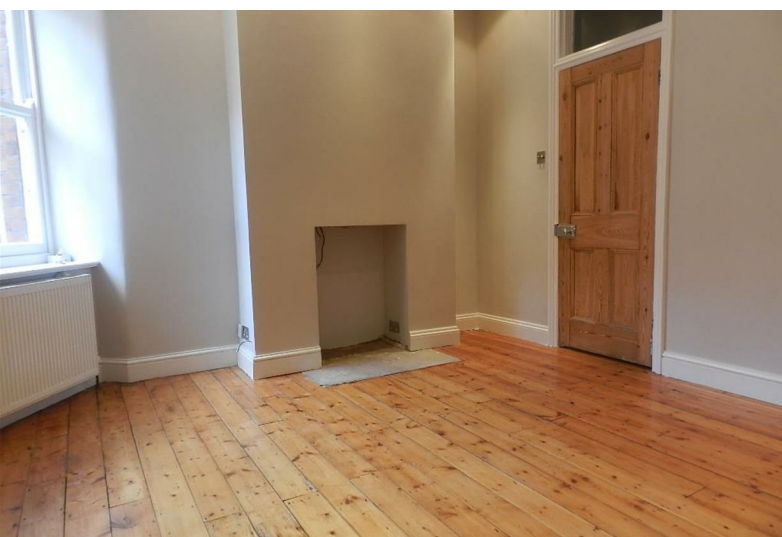


Lurline Gardens | London, SW11



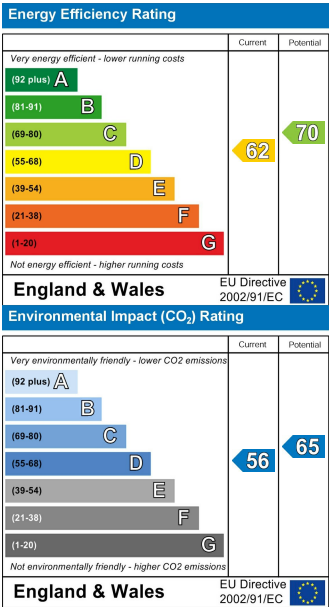
£346 Per Week

• Period Mansion Flat • One Double Bedroom • Private West Facing Garden • Stripped Floorboards • High ceilings • Reception & Separate Kitchen • Excellent transport Links • Very Close to Battersea Park

Lurline Gardens | London, SW11



Well presented ground floor garden flat in attractive Victorian mansion block ideally placed in fantastic spot seconds from the wide open spaces of Battersea Park. Comprises reception room, separate modern kitchen with dishwasher, double bedroom and recently refurbished bathroom. The flat has its own private west facing garden. Features include stripped floorboards, high ceilings and large sash windows. Leasehold covenants may apply. Tenant admin fees are payable, please call us for details or visit edenharper.com. The flat is located just south of Chelsea Bridge (a short walk from King's Road and Sloane Square), close to both Battersea Park and Queenstown Road Stations. Available early March, unfurnished.



These particulars are designed to provide a guideline only and cannot be relied upon as a statement of fact. The description represents the opinion of the author and is not intended to provide false or misleading information. Any prospective purchaser should make further checks on its accuracy. All measurements are approximate and floorplans are for representation only.



Eden Harper Property Consultants
64 Battersea Park Road, London, SW11 4JP
0207 720 1116
info@edenharper.com
www.edenharper.com